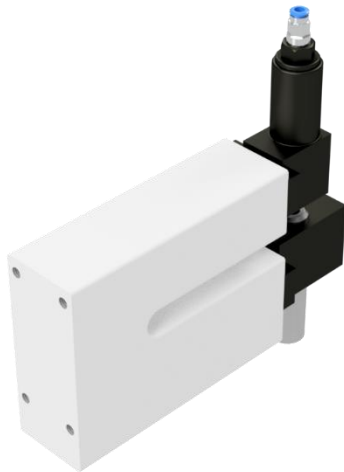




# Punch & Pin

## MOD. CF 100-300



C frame for holes on the edge of the film. It's possible to do a hole starting from diameter 2mm up to 30mm. with a throat from 100mm up to 400mm. It's also possible to do butterfly holes.



butterfly hole

**Max throat :** 400mm

**Max speed:** 250 meters per minute

**Max Frequency:** 2400 holes per minute

**Diameter of the holes:** from 2mm up to 30mm

**Not completed cut holes:** yes

**Installation on:** bag making machines, slitters, rewinders, extruders, etc

**Hole on register:** yes

**Material that could be processed:** PE, PP, paper, foam non-woven, coated material and so on

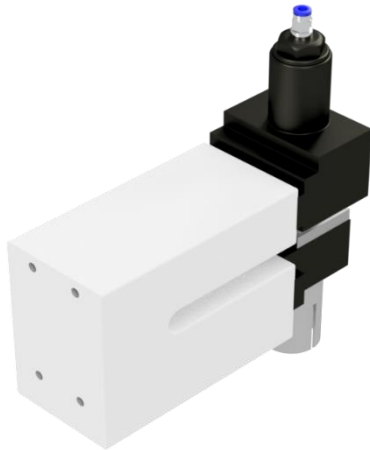
**Guides on both sides:** yes

Punch and Pin srl  
Via Zappellini , 6  
21052 Busto Arsizio (VA) - IT  
P.iva/ Vat N. IT 03772850123 - REA: VA-377853  
www. Punchandpin.com - tel. +39 3791244387  
e-mail: rosanna@punchandpin.com



# Punch & Pin

## MOD. CFL 100-300



C frame for holes on the edge of the film. It's possible to do a hole starting from 2mm up to 50mm, eurohole, handle or shaped hole with a throat from 100mm up to 400mm. It's also possible to do butterfly holes..



butterfly hole

**Max throat :** 400mm

**Max speed:** 250 meters per minute

**Max Frequency:** 2400 holes per minute

**Diameter of the holes:** from 2mm up to 50mm

**Shaped holes:** yes (handle, oval, earhole etc.)

**Not completed cut holes:** yes

**Installation on:** bag making machines, slitters, rewinders, extruders, etc

**Hole on register:** yes

**Material that could be processed:** PE, PP, paper, foam, non-woven, coated material and so on

**Guides on both sides:** yes

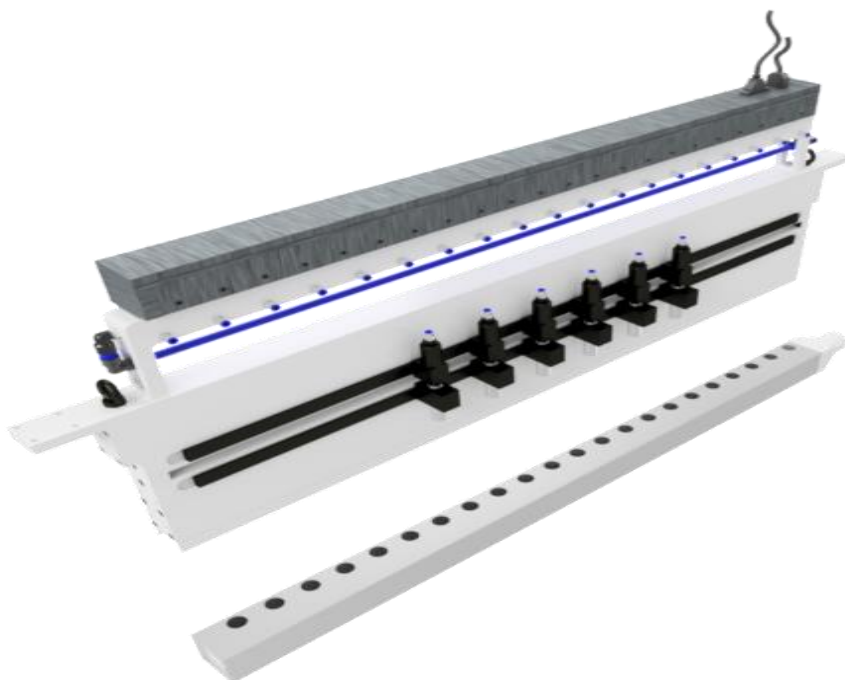
Punch and Pin srl  
Via Zappellini , 6  
21052 Busto Arsizio (VA) - IT  
P.iva/ Vat N. IT 03772850123 - REA: VA-377853  
www. Punchandpin.com - tel. +39 3791244387  
e-mail: rosanna@punchandpin.com



# Punch & Pin

## MOD. SM-SV - SM-SV2

Slim solution usually suitable for installing on bag making machine, in case of tight space.  
Punches are easily moved in set-up.



## Example of final products



Punch and Pin srl  
Via Zappellini , 6  
21052 Busto Arsizio (VA) - IT  
P.iva/ Vat N. IT 03772850123 - REA: VA-377853  
[www. Punchandpin.com](http://www.Punchandpin.com) - tel. +39 3791244387  
e-mail: [rosanna@punchandpin.com](mailto:rosanna@punchandpin.com)



# Punch & Pin

## SPECIFICATIONS

**Max material width:** 2000mm

**Max speed:** 250 meters per minute for elastic material and 120 for rigid material

**Max Frequency:** 4800 holes per minute with a double-sided bridge

**Diameter of the holes:** from 2mm up to 50mm

**Shaped holes:** yes (handle, oval, earhole, etc.)

**Not completed cut holes:** yes

**Installation on:** bag making machine, extruder, slitter, printing machine and so on

**Holes on register:** yes

**Encoder to synchronize the speed :** yes

**Material that could be processed:** PE, PP, paper, foam non-woven, coated material and so on

**Pattern:** linear, Zig zag and custom

**Job memory:** yes

**Operator language:** yes

**Easily set up punches across:** yes

**User friendly software:** yes

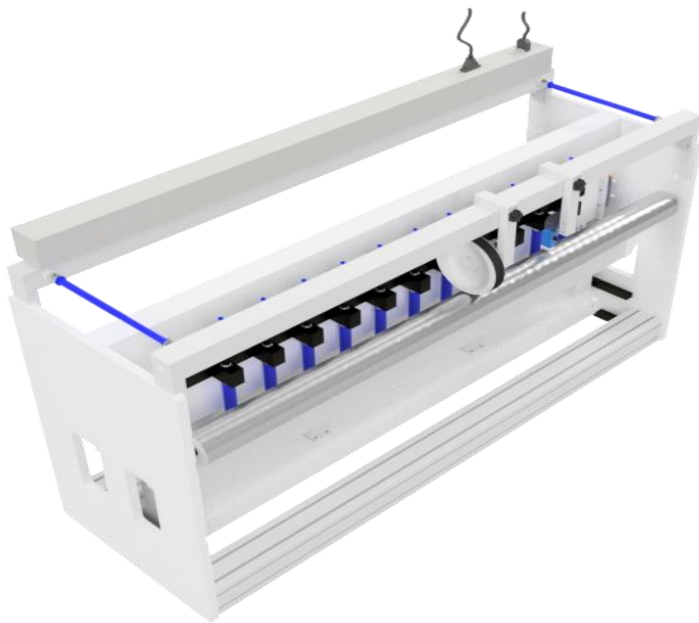
**Remote assistance:** yes



# Punch & Pin

## MOD. SM-0V - SM-0V2

It's the perfect solution for high number of holes and high frequency. It can be installed on slitters, printing machines and extruders. It's equipped with idle rollers for material passage; it has the possibility to lower the beam to facilitate material passage and die changing.



## Example of final products



Punch and Pin srl  
Via Zappellini , 6  
21052 Busto Arsizio (VA) - IT  
P.iva/ Vat N. IT 03772850123 - REA: VA-377853  
www. Punchandpin.com - tel. +39 3791244387  
e-mail: rosanna@punchandpin.com



# Punch & Pin

## SPECIFICATIONS

**Max material width:** 3000mm

**Max speed:** 250 meters per minute for elastic material and 120 for rigid material

**Max Frequency:** 4800 holes per minute with a double-sided bridge

**Diameter of the holes:** from 2mm up to 50mm

**Shaped holes:** yes (handle, oval, earhole etc.)

**Not completed cut holes:** yes

**Possibility to lower the bar that carries the dies:** yes

**Idle roller for material passage:** yes

**Installation on:** bag making machine, extruder, slitter, printing machine and so on

**Holes on register:** yes

**Encoder to synchronize the speed :** yes

**Material that could be processed:** PE, PP, paper, foam non-woven , coated material and so on

**Pattern:** linear, Zig zag and custom

**Job memory:** yes

**Operator language:** yes

**Easily set up punches across:** yes

**User friendly software:** yes

**Remote assistance:** yes

**Mobile trolley :** yes (option)

**Acoustic shield :** yes (option)

Punch and Pin srl  
Via Zappellini , 6  
21052 Busto Arsizio (VA) - IT  
P.iva/ Vat N. IT 03772850123 - REA: VA-377853  
www. Punchandpin.com - tel. +39 3791244387  
e-mail: rosanna@punchandpin.com



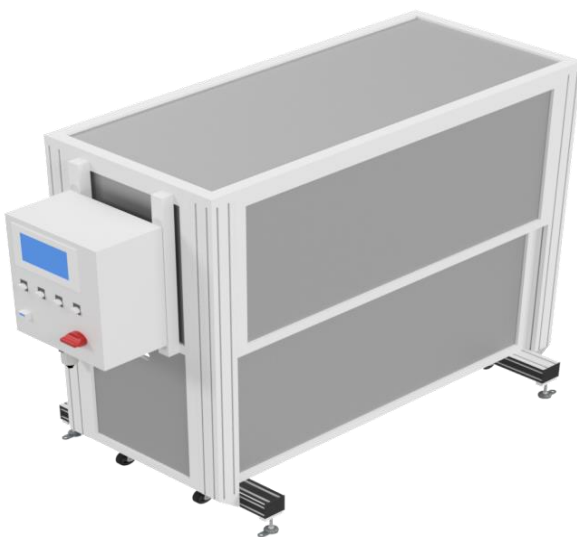
Punch & Pin

## MOD. SM-0V - SM-0V2 WITH TROLLEY



This unit is equipped with the mobile trolley to move it and to allow the operator to easily carry out maintenance operations.

## MOD. SM-0V - SM-0V2 WITH ACOUSTIC SHIELD



Is possible also to soundproof the punching unit with an acoustic shield to reduce sensibly the noise.

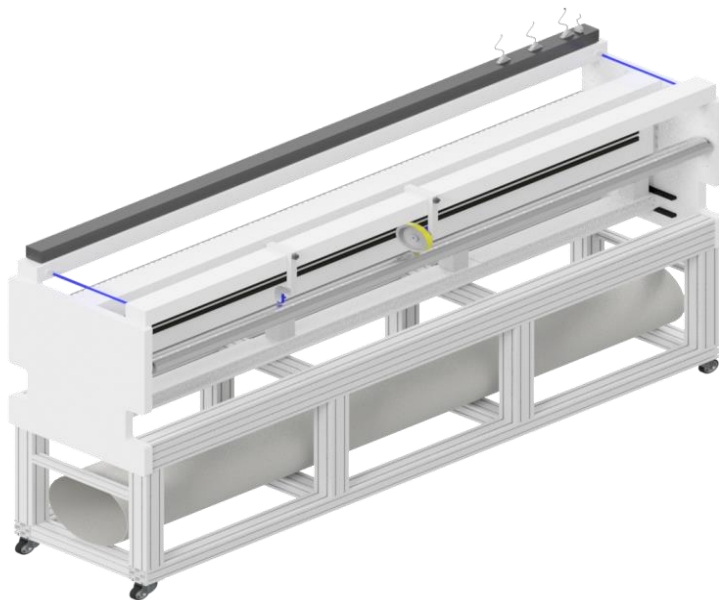
Punch and Pin srl  
Via Zappellini , 6  
21052 Busto Arsizio (VA) - IT  
P.iva/ Vat N. IT 03772850123 - REA: VA-377853  
www. Punchandpin.com - tel. +39 3791244387  
e-mail: rosanna@punchandpin.com



# Punch & Pin

## MOD. SM-MOV - SM-MOV2

The MOD. SM-MOV is our . It's the strongest and the hardest punching unit is the best solution for mulching film where the diameter of the holes is huge.



## Example of final products



Punch and Pin srl  
Via Zappellini , 6  
21052 Busto Arsizio (VA) - IT  
P.iva/ Vat N. IT 03772850123 - REA: VA-377853  
www. Punchandpin.com - tel. +39 3791244387  
e-mail: rosanna@punchandpin.com



# Punch & Pin

## SPECIFICATIONS

**Max material width** : 4000mm

**Max speed**: 150 meters per minute

**Max Frequency**: 3000 holes per minute with a double-sided bridge

**Diameter of the holes**: from 2mm up to 100mm

**Shaped holes**: yes

**Not completed cut holes**: yes

**Possibility to lower the bar that carries the dies**: yes

**Idle roller for material passage**: yes

**Installation on**: extruder, slitters unwinder/rewinder.

**Holes on register**: yes

**Encoder to synchronize the speed** : yes

**Material that could be processed**: PE, PP, paper, foam non-woven , coated material and so on

**Pattern**: linear, Zig zag and custom

**Job memory**: yes

**Operator language**: yes

**Easily set up punches across**: yes

**Friendly software for pattern programming**: yes

**Remote assistance**: yes

**Mobile trolley** : yes (option)

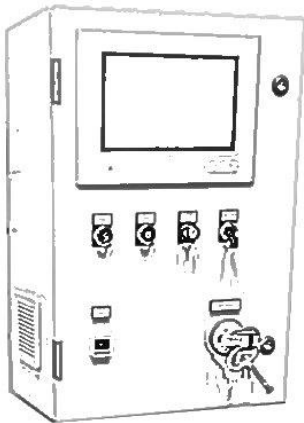
**Acoustic shield** : yes (option)

Punch and Pin srl  
Via Zappellini , 6  
21052 Busto Arsizio (VA) - IT  
P.iva/ Vat N. IT 03772850123 - REA: VA-377853  
www. Punchandpin.com - tel. +39 3791244387  
e-mail: rosanna@punchandpin.com



# Punch & Pin

## ELECTRONIC CONTROLS



### Electronic control with touch screen 10"

The electronic control with touch screen 10" is for industry 4.0: intelligent solution, innovation and leading-edge perfectly the perforation pattern on them as required.

**Holes on register:** yes

**Encoder to synchronize the speed:** yes

**Pattern:** linear, Zig zag and custom

**Job memory:** yes

**Operator language:** yes

**User friendly software with touch screen:** yes. Is very friendly for programming the recipe. Is possible to check individually each punch head.

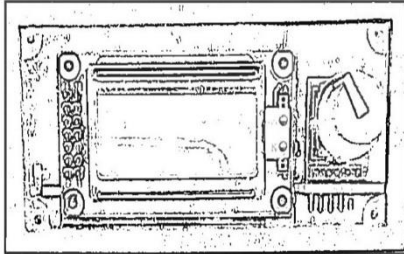
**Remote assistance:** yes

Punch and Pin srl  
Via Zappellini , 6  
21052 Busto Arsizio (VA) - IT  
P.iva/ Vat N. IT 03772850123 - REA: VA-377853  
www. Punchandpin.com - tel. +39 3791244387  
e-mail: rosanna@punchandpin.com



# Punch & Pin

## Electronic control MOD. LIZ - GAP



MOD. LIZ It' a simple electronic control that take the signal of firing from hosting machine

MOD. GAP It' a simple electronic control to do the holes at a pre-set distance

**Holes on register:** no

**Encoder to synchronize the speed :** yes for model GAP

**Pattern:** linear, Zig zag. All punches fire at the same moment.

**Job memory:** no

**Remote assistance:** yes

This is a very easy solution for installing on bag making machine or extruder in case of a low number of holes.

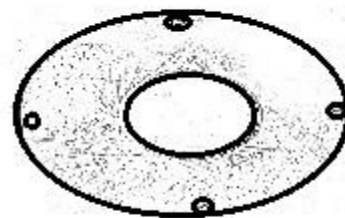
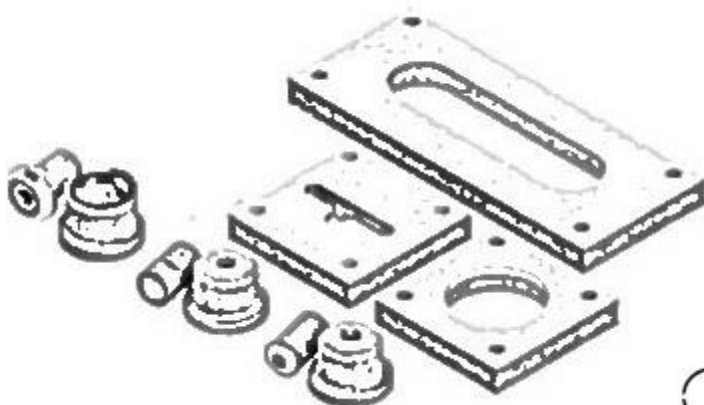
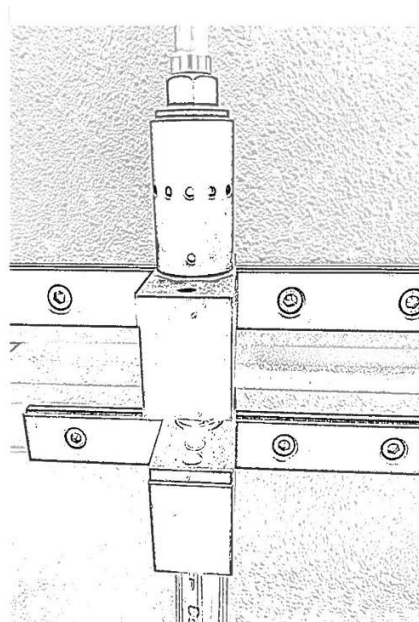
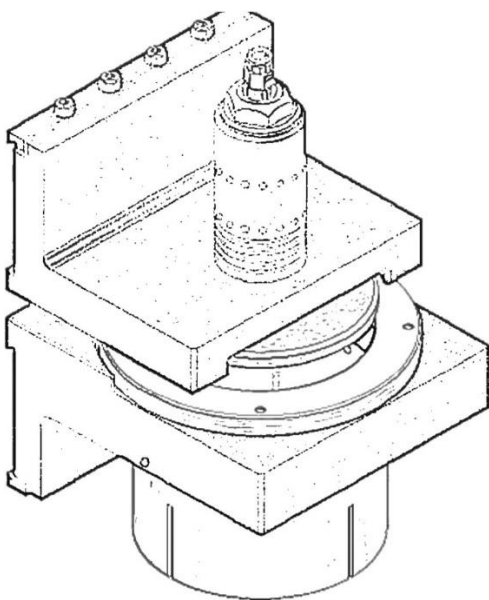
Punch and Pin srl  
Via Zappellini , 6  
21052 Busto Arsizio (VA) - IT  
P.iva/ Vat N. IT 03772850123 - REA: VA-377853  
www. Punchandpin.com - tel. +39 3791244387  
e-mail: rosanna@punchandpin.com



# Punch & Pin

## SPARE PARTS

We can offer spare parts of competitors' punching units, like hammers and dies and so on



butterfly

Punch and Pin srl  
Via Zappellini , 6  
21052 Busto Arsizio (VA) - IT  
P.iva/ Vat N. IT 03772850123 - REA: VA-377853  
www. Punchandpin.com - tel. +39 3791244387  
e-mail: rosanna@punchandpin.com